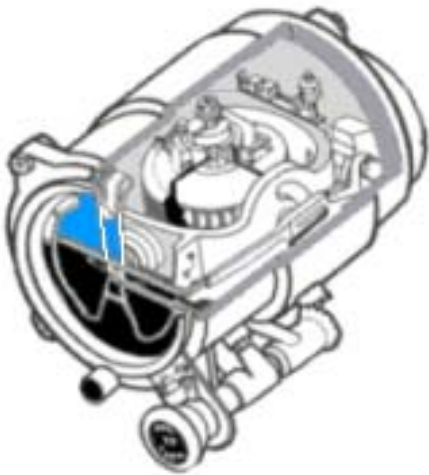
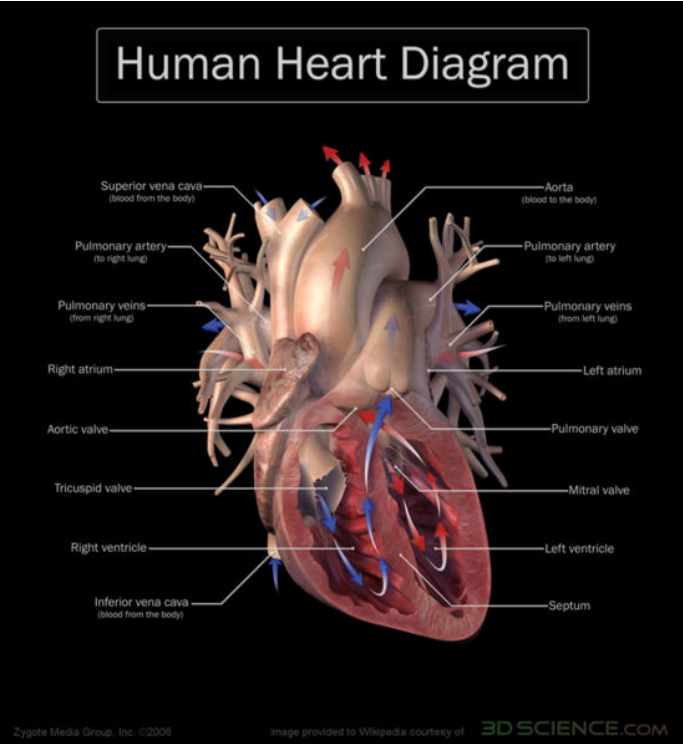


## System Illustration Supplement

For each of the systems illustrated identify the energy storage elements (kinetic and potential), the dissipative elements, the energy domains, and any device which converts energy from one domain to another.



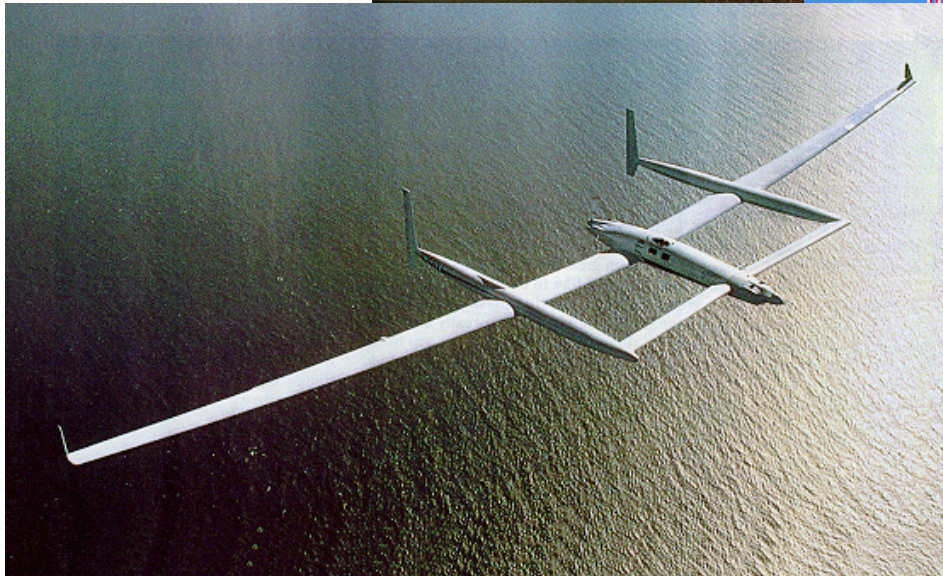


System Illustration Supplement

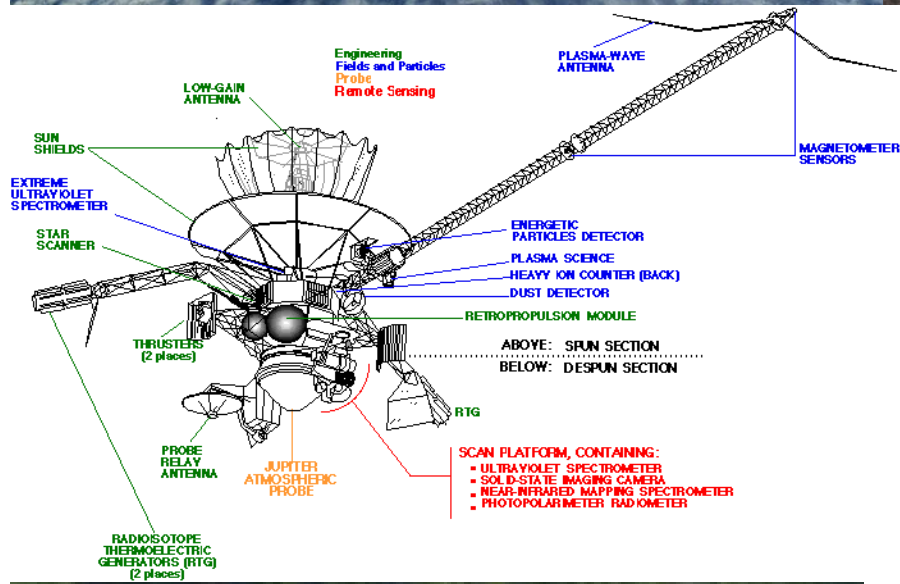


ES360 Introduction to Controls Engineering  
System Illustration Supplement

---

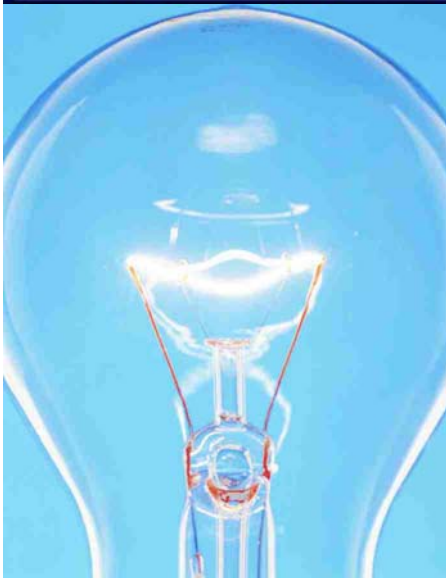


System Illustration Supplement



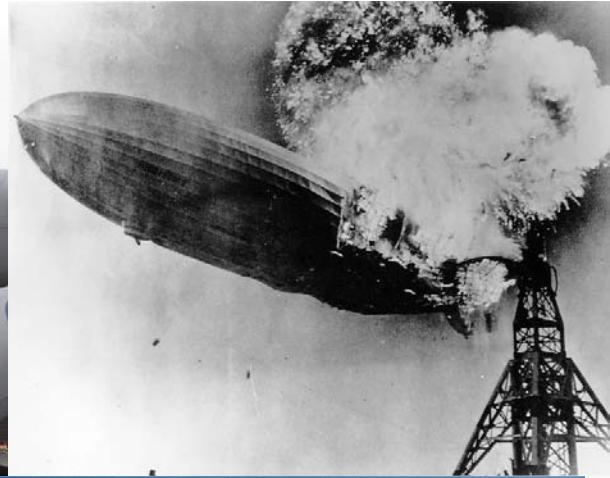
ES360 Introduction to Controls Engineering  
System Illustration Supplement

---

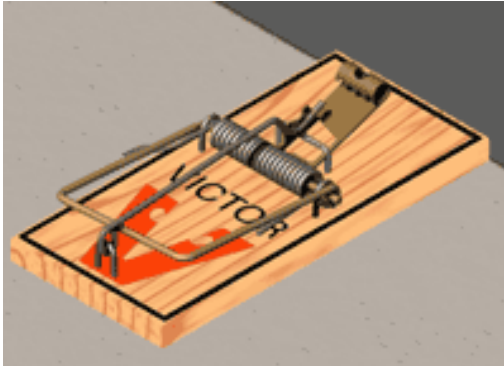
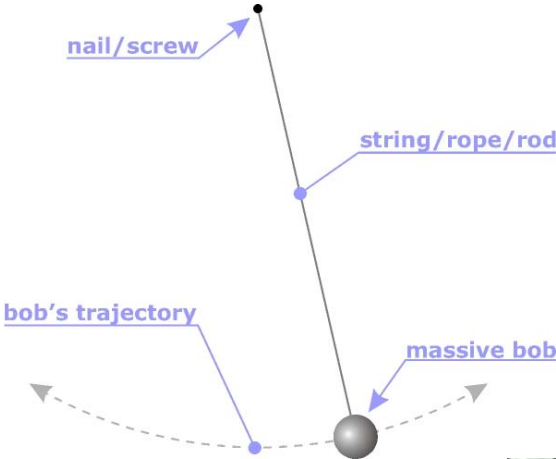


ES360 Introduction to Controls Engineering  
System Illustration Supplement

---

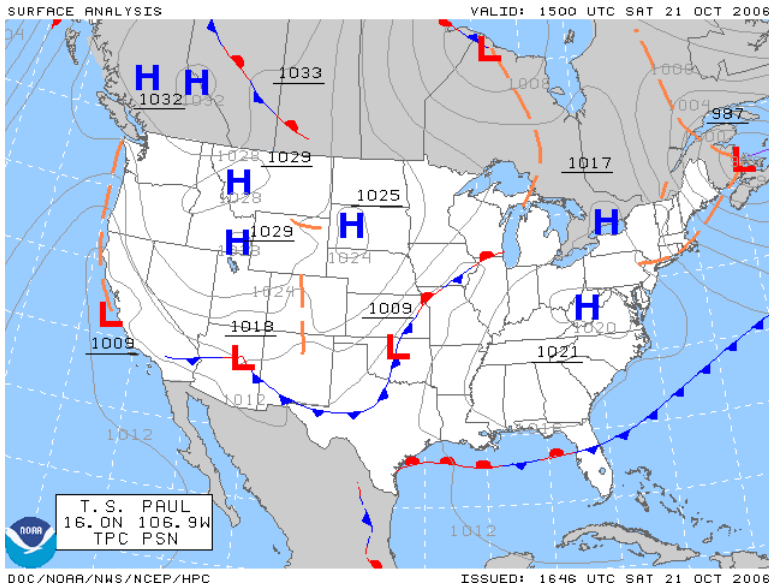


System Illustration Supplement

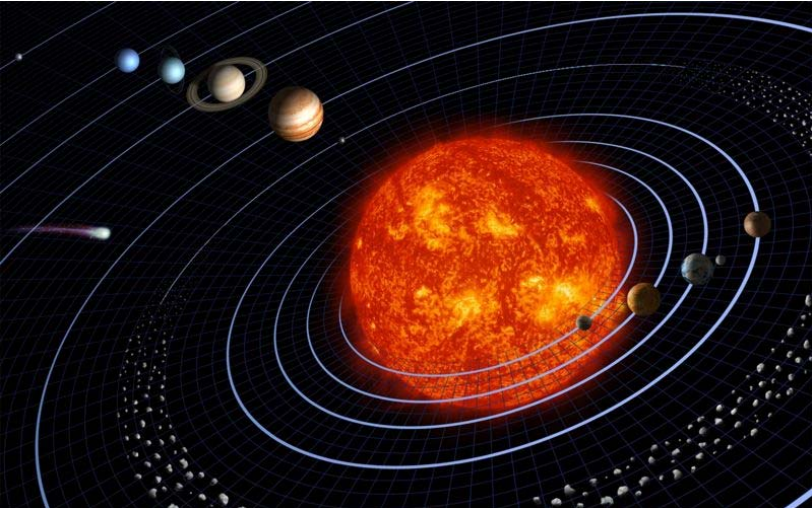
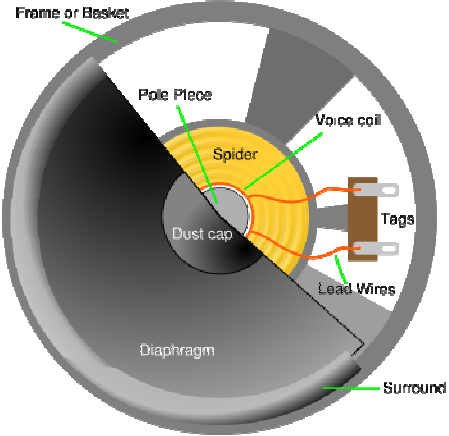
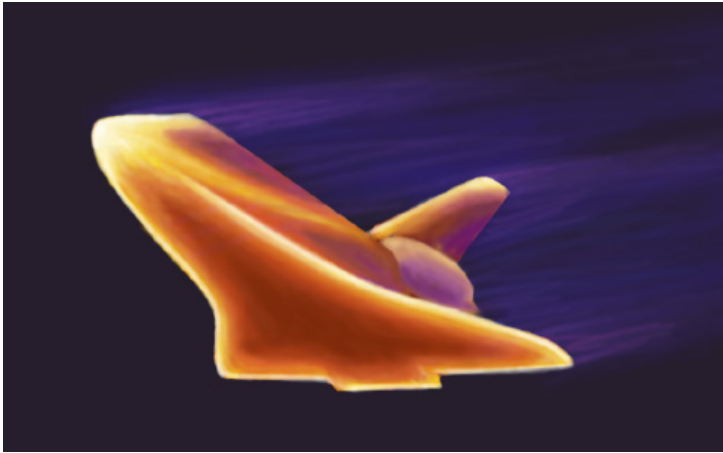




System Illustration Supplement



System Illustration Supplement



System Illustration Supplement

